



Flow, Reveal, Lingo, Link & Mien

Expression

Vibrant loop carpet tile

Expression

Vibrant loop carpet tile



Guise

LRV 28.0



Flow

LRV 18.0



Remark

LRV 23.0



Mien

LRV 12.0



Reveal

LRV 6.0



Style

LRV 15.0



Code

LRV 11.0



Lingo

LRV 4.0



Term

LRV 19.0



Stamp

LRV 5.0



Link

LRV 3.0

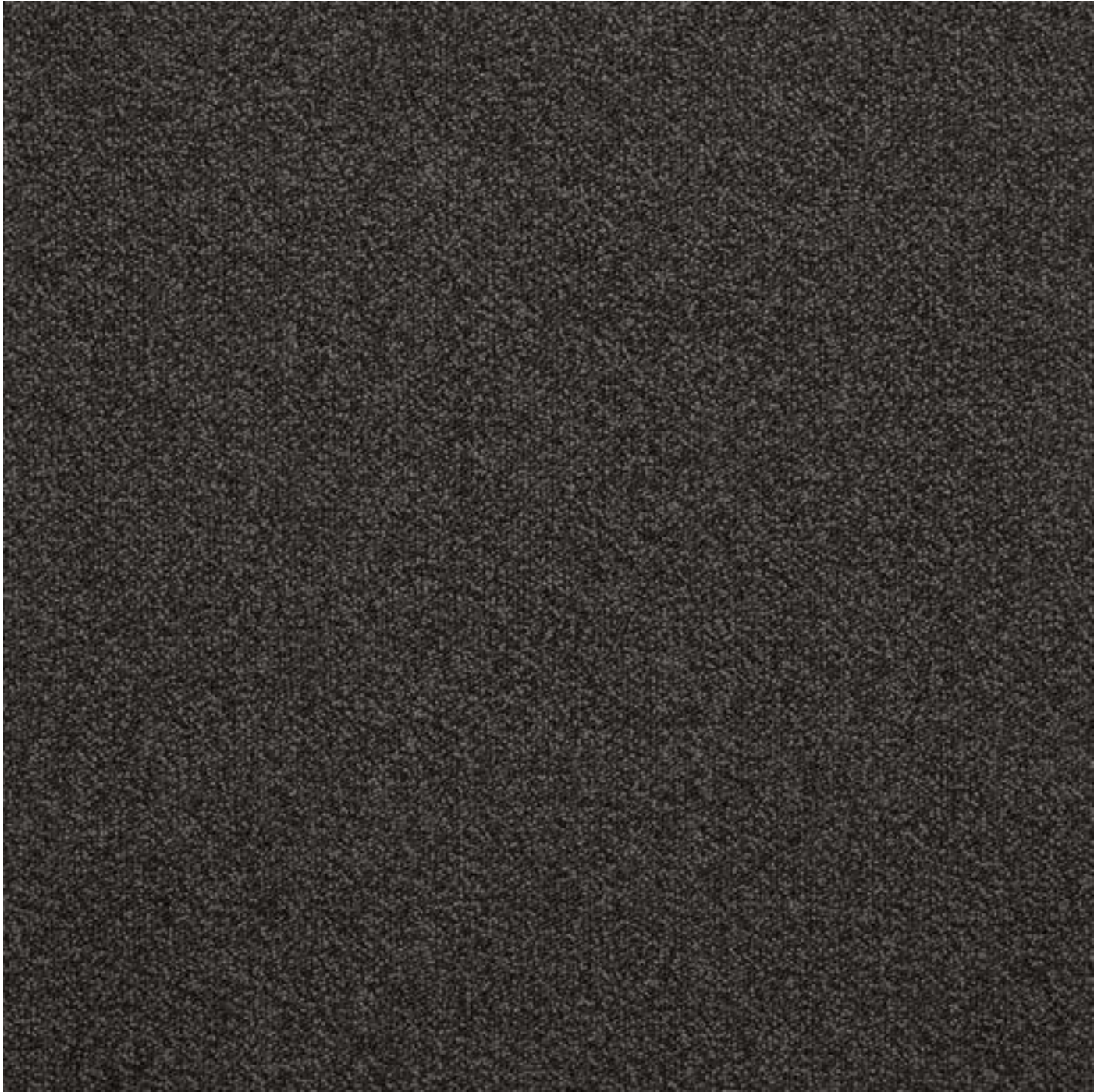


Poise

LRV 21.0

Expression

Vibrant loop carpet tile



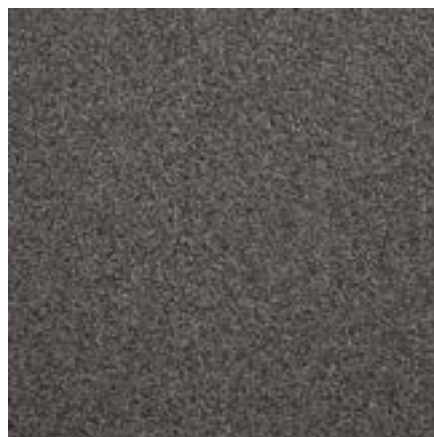
Articulate

LRV 4.0



Drama

LRV 13.0



Aspect

LRV 8.0



State

LRV 6.0

Expression Specification



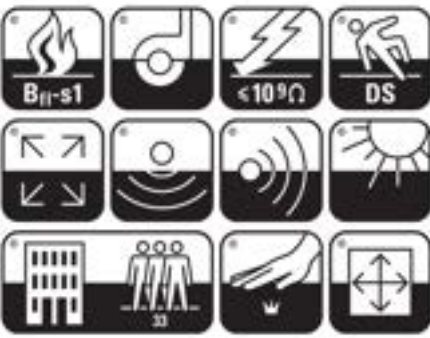
COMPOSITION		
Construction	ISO2424	Tufted 1/10th Loop Pile
Pile Fibre	ISO2076	ECONYL 100% Regenerated Solution Dyed Nylon
Primary Backing	ISO2424	Non-woven Polyester
Secondary Backing	ISO2424	Bitumen with glass fibre 3kg/m ²
Pile Height	ISO1766	3.2 mm ± 0.5mm
Total Height	ISO1765	6.3 mm ± 0.5mm
Pile Weight	ISO1958	600 gr/m ² ± 5%
Total Weight	ISO8543	4400 gr/m ² ± 10%
Pile Density	ISO1763	160,000 tufts/m ² ± 5%
Tile Size	EN994	50 x 50 cm
Tiles per Box		20 tiles per box (5m ²)

CLASSIFICATION		
Flammability (Fire Spread EN13501)	ISO11925	Fs ≤ 150mm within 20 seconds
Flammability (Radiant Panel EN13501)	ISO9239	B _{fl} -S1
Flammability (Hot Metal Nut)	BS4790	Low radius effects of ignition
Wear Resistance (Castor Chair Test)	ISO4918	Pass > 2.4 (A – Continuous Use)
Electrical Vertical Resistance	ISO10965	Pass ≤ 10 ⁹ Ω
Electrostatic Propensity (Stroll Test)	ISO6356	Pass <2.0kV
Slip Resistance	EN13893	DS
Dimensional Stability	EN986	Pass <0.2%
Acoustic Impact Noise Reduction	ISO717	25dB
Sound Absorption	ISO354	500Hz-0.06as, 1000Hz-0.14as, 2000Hz-0.31as, 4000Hz-0.39as
Colour Fastness – Light (CIELAB)	ISO105	≥7
Colour Fastness – Rubbing (CIELAB)	ISO105	≥4
Colour Fastness – Water (CIELAB)	ISO105	≥4
Classification for Use	ISO10874	Class 33 Commercial Heavy
Luxury Class Rating	EN1307	LC1

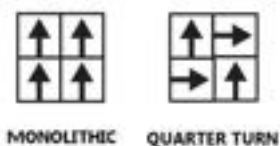
WARRANTY

10 Year Wear Warranty

CERTIFICATION



INSTALLATION



© The Floor Hub. Specifications are subject to normal manufacturing tolerances and may be changed without prior notice. Copies of actual test results are available on request.

The Floor Hub HQ, Unit E Ventura Business Park, Colney Street, AL2 2DB
Tel: 01923 211151 Email: sales@thefloorhub.co.uk

www.thefloorhub.co.uk